

Route 9

Updated: September 2020

Crescent Junction via Monticello to Colorado Line. Thompson-Monticello, 1910. Monticello - Colorado Line, 1913. Change Thompson to Crescent Junction by Commission in 1934.

1953 Description:

From Crescent Junction on Route 8 southeasterly, via Moab and LaSal Junction to Monticello; thence southeasterly, to the Utah-Colorado State line.

1962 Description:

From Crescent Junction on Route 4 southeasterly, via Moab and LaSal Junction to Monticello; thence southeasterly, to the Utah-Colorado State line.

1963 Description:

From Crescent Junction on Route 4 southeasterly, via Moab and Monticello; thence southeasterly, to the Utah-Colorado State line.

Approved by 1963 Legislature:

1965 Description:

From Crescent Junction on Route 4 (Interstate Route 70) southeasterly via Moab and Monticello, thence southeasterly to the Utah-Colorado State line.

Approved by 1965 Legislature:

**(*A) Scanned)

Approved by 1967 Legislature:

*B) 1977 Commission Action (May 20, 1977)

The 1967 description of State Route 9 has been deleted from the State System and reassigned in part to the old description of State Route 15 and part to State Route 163.

*C) Right of Way transfer.

1979 Description - (1979 Legislature):

From Harrisburg Junction on Route 15 (Interstate 15) easterly to Zion National Park south boundary, thence from Zion National Park east boundary to Mt. Carmel Junction on Route 89.

1981 Legislature: Description remains the same.

1983 Legislature: Description remains the same.

1985 Legislature: Description remains the same.

1986 Legislature: Description remains the same.

1987 Legislature: Description remains the same.

1988 Legislature: Description remains the same.

1990 Legislature: Description remains the same.

1992 Legislature: Description remains the same.

1993 Legislature: Description remains the same.

1994 Legislature: Description remains the same.

Route 9 Cont.

1995 Legislative Description:

From a junction with Route 15 at Harrisburg Junction easterly to Zion National Park south boundary, and from Zion National Park east boundary to Route 89 at Mt. Carmel Junction.

1996 Legislature: Description remains the same.

1997 Legislature: Description remains the same.

1998 Legislative Description:

From Route 15 at Harrisburg Junction easterly to Zion National Park south boundary through the Zion National Park east boundary to Route 89 at Mt. Carmel Junction.

1999 Legislature: Description remains the same.

2000 Legislature: Description remains the same.

2001 Legislature: Description remains the same.

2002 Legislature: Description remains the same.

2003 Legislature: Description remains the same.

2004 Legislature: Description remains the same.

2005 Legislature: Description remains the same.

2006 Legislature: Description remains the same.

2007 Legislature: Description remains the same.

2008 Legislature: Description remains the same.

2010 Legislature: Description remains the same.

2011 Legislative Description:

From Route 15 at Harrisburg Junction easterly to Zion National Park south boundary, and from Zion National Park east boundary to Route 89 at Mt. Carmel Junction.

2016 Legislation: Description remains the same.

2020 Legislation: Description remains the same.

* Refers to resolution index on the following page.

** Refers to Scanned Computer Resolution on the following page.

Route 9

COUNTY/VOLUME & RESOLUTION NO.

A. San Juan Co. 1/130	B. Washington & Kane Co. 6/2	C. Washington Co. 6/3
D. Washington Co.		

DESCRIPTION OF RESOLUTION CHANGE

- (A). Relocation - From Moab Airport toward Cane Springs.

- (B). Re-designation - SR-15 to SR-9, also portion that was SR-9 designated as SR-163.

- (C). Disposition - Abandoned roadway and surplus right-of-way east of Harrisburg Jct.

- (D). Transfer - Old Alignment portion of SR-9 transferred to Town of Virgin

19-9-3

RESOLUTION

State Route 9

WHEREAS, with the completion of Project F-013-1(4) from the Moab Airport toward Cane Springs Park in San Juan County, a distance of 3.005 miles has resulted in the construction on new alignment a section of roadway and,

WHEREAS, the old alignment will still serve as a public roadway although not justified as a part of the State System of Highways and,

WHEREAS, to maintain continuity in the State System of Highways and,

WHEREAS, it has been recommended by Mr. Joseph Q. Adair, District Engineer, that the road changes be made as follows.

NOW THEREFORE, pursuant to the Authority of Section 27-12-27, UCA, 1953, AS AMENDED, it is hereby resolved as follows:

1. That the portion of highway constructed on new alignment as a result of Project F-013-1(4) be designated as a part of State Route 9.
2. That the old alignment of State Route 9 between Stations 572 + - to 647 + - be transferred to the jurisdiction of San Juan County.
3. That by this action State Highway System mileage will decrease 0.2 + - mile, and San Juan County "B" mileage will increase 2.5 + - miles.
4. That Exhibit "A" attached herewith illustrating the action taken herewith is hereby incorporated as a part of this submission.

Dated this 23rd day of September, 1966.

STATE ROAD COMMISSION OF UTAH

[Signature]
Chairman

SR-9
130



Commissioner



Commissioner



Commissioner

Commissioner

ATTEST:



Secretary

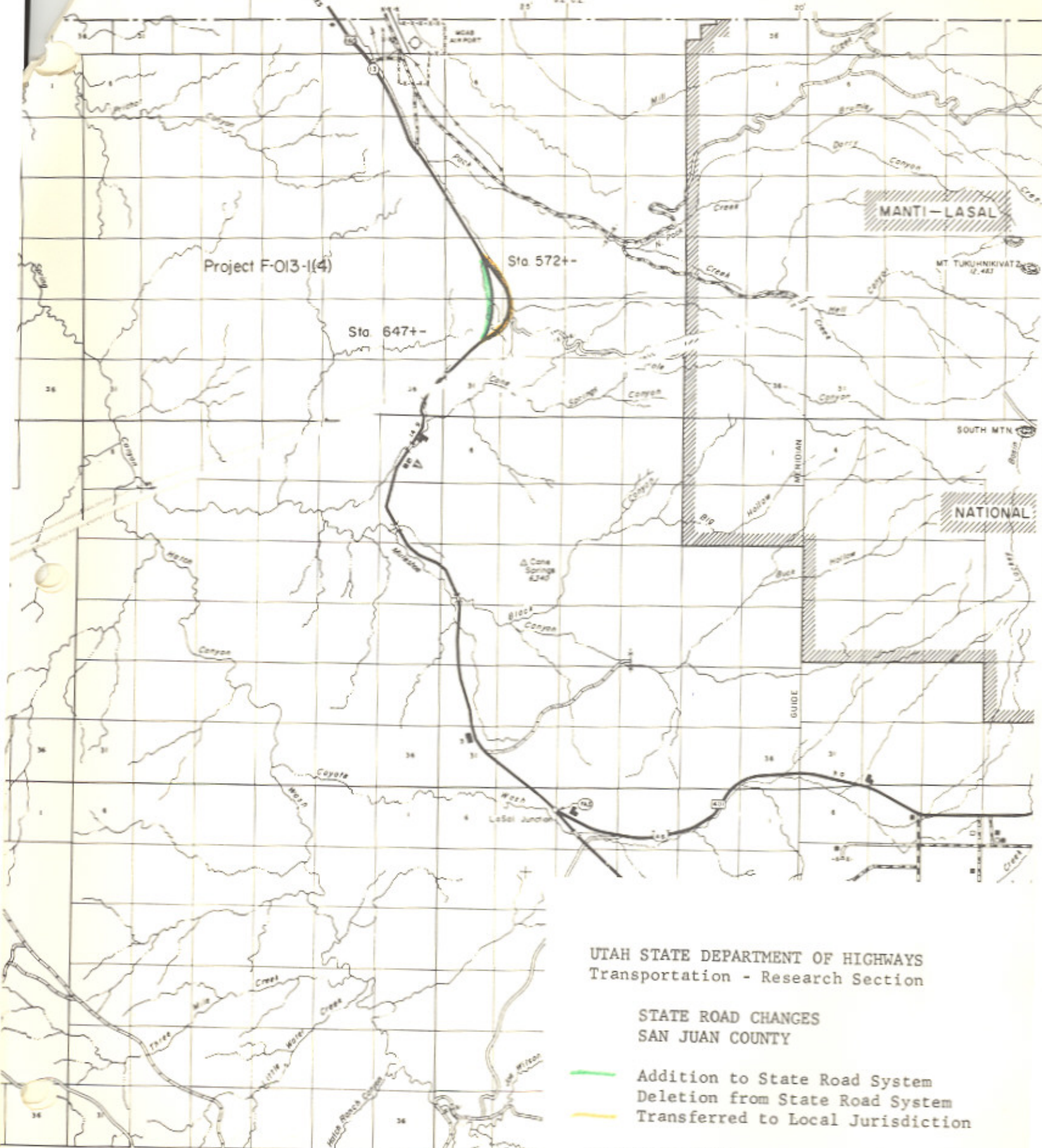
109° 3'

R 22 E

2,800,000 S.Z. 02

R 23 E

R 24 E



UTAH STATE DEPARTMENT OF HIGHWAYS
 Transportation - Research Section

STATE ROAD CHANGES
 SAN JUAN COUNTY

- Addition to State Road System
- Deletion from State Road System
- Transferred to Local Jurisdiction

Date Submitted: _____

Date Approved: _____

R 22 E

2,800,000 S.Z.

Washington

RESOLUTION

State Route 9

WHEREAS, the reconstruction of State Route 9 at Harrisburg Junction in Washington County, as Project F-016-1(1) was completed in 1963-4, and

WHEREAS, no disposition of the abandoned roadway and surplus right-of-way east of Harrisburg Junction has been made, and

WHEREAS, it has been recommended by Alex Mansour, District #5 Director, that the old section of roadway between Engineer Stations 19+50± to 11+50± on Highway Project No. F.A.P. 113-A be abandoned.

NOW THEREFORE, be it resolved as follows:

That the old alignment of State Route 9 between Engineer Stations 19+50± to 11+50± be abandoned and ownership transferred to Washington County,

The above described parcel of land is granted without access to or from the adjoining highway over and across the southeasterly boundary line of said parcel.

That the attached map showing the area to be abandoned, in the color red, be hereby incorporated as part of this submission.

Dated this 29th day of June, 1977.

UTAH TRANSPORTATION COMMISSION

B. La Shawn Cox
Chairman

Wesley A. Albreton
Vice-Chairman

Robert E. Leonard
Commissioner

SR 9
wash

Resolution
State Route 9
Page 2

Samuel J. Taylor
Commissioner

Clayton A. Church
Commissioner

Attest:

Donald A. Farley
Secretary

SR 9
wash
177704

UTAH STATE DEPARTMENT OF HIGHWAYS

July 27, 1977

C
O
P
Y

Mr. Truman Bowler, Chairman
Washington County Commission
Washington County Courthouse
St. George, Utah 84770

Dear Commissioner Bowler:

Subject: Transfer of Roadway and Right of Way in Washington County

On June 24, 1977, the Utah Transportation Commission approved the transfer to Local Jurisdiction, the abandoned portion of the old alignment of State Route 9 at Harrisburg Junction as described in the enclosed resolution.

Enclosed is a copy of the resolution and a location map.

Very truly yours,

L. R. Jester, P.E.
Engineer for Transportation Planning

Enclosure

bc: Howard B. Leatham, Engineer for Planning & Programming
Alex Mansour, District #5 Director

Information sent to:

Jerry Fenn	W. J. Stephenson 10-M	Harold Brown	Charles Bertolina
Ralph Mirdock	J. Q. Adair	Ray Behling	Jim West Lovelace
Dennis Spackman	David L. Kennison	Bonnie Garcia	Don Jensen
Robert Wheadon	Robin Hood	John W. Homer	Clarence Bywater
Keith Rosevear	Art Guerts	Jo Ann Slaugh	Ken Riddle

PI. 22+52.1

LOT 5
SEC. 4

PT. 22+52.1

230.98'

18+98.1

PC

To Cedar City

$\Delta 140^{\circ}59'$
R. 113.81'
L. 7106.1'
L. 354.0'

S 86° 11' E

706.0'

706.0'

SW 1/4 NE 1/4
SEC. 4

7100

25.00' Back
EQUATION
5.00' Ahead

40 ACRE LINE

PC. 9+58.1

10

1/4 LINE

556' PROJ.



1/4

40 ACRE LINE

06.0'

PC 9+58.1

10

10:45
10-45 Birch King

L/A LINE

556' ±
PROJ. NO. F-016-1(11)

573' ±

15

A 46° 21'
D 5° 00'
R 111663
T 4907
L 9270

SE 1/4 NE 1/4
SEC. 4

158781 LB



RESOLUTION

Redesignation of Various State Routes

WHEREAS, it has been determined that it would be advantageous for record keeping and developing a Highway Reference System that various state routes be redesignated by hierarchy with the route number being synonymous with the US route designation, and

WHEREAS, this proposed revision of State Route Designations is concurred in by all District Directors.

NOW THEREFORE, be it resolved as follows:

That Interstate Route 15 be designated as State Route 15 and by this action delete the designation of State Route 1 and redesignate present State Route 15 as State Route 9,

That Interstate Route 80 be designated as State Route 80 and by this action delete the designation of State Route 2 and redesignate present State Route 80 as State Route 92,

That Interstate Route 80N be designated as State Route ~~82~~⁸⁴ and by this action delete the designation of State Route 3 and redesignate present State Route ~~82~~⁸⁴ as State Route ~~126~~⁸²,

That Interstate Route 70 be designated as State Route 70 and by this action delete the designation of State Route 4 and redesignate present State Route 70, part of State Route 102, part of State Route 69, part of State Route 16 and State Route 51 as State Route 30 and by this action delete the designation of State Route 51,

That Interstate Route 215 be designated as State Route 215 and by this action delete the designation of State Route 5,

That US-6 and 50 from the Utah-Nevada State line to Delta be designated as State Route 6 and that US-6 from Delta to the junction with I-70 west of

RESOLUTION

Redesignation of Various State Routes

Page 2

Green River also be designated as State Route 6 and by this action delete the designation of State Route 27,

That US-40 be designated as State Route 40 and by this action delete the designation of State Route 6 and redesignate present State Route 40 as State Route 134,

That US-50 from Delta to Salina be designated as State Route 50 with the exception of that section coincident with Interstate Route 15 and by this action delete the designation of State Route 26 and redesignate a part of present State Route 50 as State Route 26,

That US-89 be designated as State Route 89 with the exception of those sections coincident with Interstate Route 70, US-6, I-15 and US-91 and by this action delete the designation of State Route 259, part of State Route 11, part of State Route 28, State Route 32, State Route 8, State Route 271, part of State Route 106, State Route 169, State Route 49, part of State Route 50, part of State Route 84, State Route 13 and the remaining part of State Route 16, redesignate present State Route 89 as State Route 169 and redesignate that portion of State Route 84 from Brigham northerly to State Route 30 as State Route 13,

That US-91 be redesignated as State Route 91 and by this action delete the designation of State Route 85,

That US-189 be designated as State Route 189 with the exception of those sections coincident with US-40 and Interstate Route 80 and by this action delete the designation of State Route 7, 151 and part of State Route 35,

That US-163 be designated as State Route 163 and by this action delete the designation of State Route 47, part of State Route 9 and redesignate present State Route 163 as State Route 78,

That US-666 be designated as State Route 666 and by this action delete

RESOLUTION

Redesignation of Various State Routes

Page 3

the remaining portion of State Route 9,

That as a result of the aforementioned revisions the State Routes involved will be described as follows:

Route 6 From the Utah-Nevada State line easterly via Delta and Tintic Junction, thence easterly via Santaquin, Payson and Spanish Fork to Moark Junction, thence easterly via Spanish Fork Canyon and Price to Route 70 (Interstate Route 70) west of Green River.

Route 9 From Harrisburg Junction on Route 15 (Interstate Route 15) easterly to Zion National Park south boundary, thence from Zion National Park east boundary to Mt. Carmel Junction on Route 89.

Route 11 From the Utah-Arizona State line north to a junction with Route 89 in Kanab.

Route 13 From a junction with Route 91 in Brigham City northerly via Bear River and Haws Corner to a point south of Riverside, thence east to Route 30 north of Collinston.

Route 15 From the Utah-Arizona State line near St. George to the Utah-Idaho State line south of Malad, Idaho, (traversing the alignment of Interstate Route 15). Segments of present State Routes used as Interstate Traveled-way will remain State responsibility until these segments are replaced by completed Interstate Projects.

Route 16 From the Utah-Wyoming State line northerly to Route 30 at Sage Creek Junction.

Route 26 From Route 84 in Roy easterly to Route 89 in Ogden (Former SR-50 Part).

Route 28 From a junction with Route 89 in Gunnison northerly via Levan to a junction with Route 15 (Interstate Route 15) north of Levan.

Route 30 From the Utah-Nevada State line northeasterly via Curlew Junction to Route ~~82~~⁸⁴ (Interstate Route 80N) west of Snowville. Then commencing

RESOLUTION
Redesignation of Various State Routes
Page 4

again at a junction with Route ~~82~~⁸⁴ (Interstate Route 80N) west of Tremonton easterly via Tremonton, Haws Corner and Collinston to Route 91 in Logan. Then commencing again at a junction with Route 89 in Garden City southeasterly via Sage Creek Junction to the Utah-Wyoming State line.

✓ Route 35 From Route 189 at Francis southeasterly via Tabiona to Route 87 north of Duchesne.

✓ Route 40 From Silver Creek Junction on Route 80 (Interstate Route 80) easterly via Heber City, Duchesne and Vernal to the Utah-Colorado State line.

✓ Route 50 From Route 6 in Delta southeasterly to Holden, thence northerly to Route 15 (Interstate Route 15) and commencing again on Route 15 (Interstate Route 15) near Scipio southeasterly via Scipio to a junction with Route 89 in Salina.

✓ Route 69 From Brigham on Route 13 northerly via Honeyville to Route 30 at Deweyville.

✓ Route 70 From Route 15 (Interstate Route 15) near Cove Fort to the Utah-Colorado State line west of Grand Junction, Colorado, (traversing the alignment of Interstate Route 70). Segments of present State Routes used as Interstate Traveled-way will remain State responsibility until these segments are replaced by completed Interstate Projects.

✓ Route 78 From Route 15 (Interstate Route 15) west of Levan east to Route 28 in Levan.

✓ Route 80 From the Utah-Nevada State line near Wendover to the Utah-Wyoming State line west of Evanston, Wyoming, (traversing the alignment of Interstate Route 80). Segments of present State Routes used as Interstate Traveled-way will remain State responsibility until these segments are replaced by completed Interstate Projects.

RESOLUTION
Redesignation of Various State Routes
Page 5

✓ ⁸⁴
Route ~~82~~ From the Utah-Idaho State line near Snowville to a point on Route 15 (Interstate Route 15) near Tremonton, thence from another point on Route 15 (Interstate Route 15) near Roy to Route 80 (Interstate Route 80) near Echo, (traversing the alignment of Interstate Route ⁸⁴~~80~~). Segments of present State Routes used as Interstate Traveled-way will remain State responsibility until these segments are replaced by completed Interstate Projects.

✓ ¹²⁶
Route ~~84~~ From Route 15 (Interstate Route 15) south of Layton northerly to Route 89 at Hot Springs Junction.

✓ Route 89 From the Utah-Arizona State line northwest of Page, Arizona, westerly to Kanab, thence northerly to a junction with Route 70 (Interstate Route 70) at Sevier Junction. Then commencing again at the junction with Route 70 (Interstate Route 70) south of Salina northerly via Salina, Gunnison and Mt. Pleasant to a junction with Route 6 at Thistle Junction. Then commencing again at a junction with Route 6 at Moark Junction northerly via Springville, Provo, Orem and American Fork to Route 15 (Interstate Route 15) north of Lehi. Then commencing again at a junction with Route 15 (Interstate Route 15) near Draper Crossroads northerly via Murray and Salt Lake City to a junction with Route 15 (Interstate Route 15) at Becks Interchange. Then commencing again at a junction with Route 15 (Interstate Route 15) near Orchard Drive northerly via Bountiful to a junction with Route 15 (Interstate Route 15) at North Bountiful Interchange. Then commencing again at a junction with Route 15 (Interstate Route 15) at Lagoon Junction northerly via Uintah Junction and Ogden to Route 91 near south city limits of Brigham City. Then commencing again at a junction with Route 91 in Logan northeasterly to Garden City, thence north to the Utah-Idaho State line.

○ Route 91 From Route 15 (Interstate Route 15) south of Brigham, thence

RESOLUTION

Redesignation of Various State Routes

Page 6

easterly via Brigham Canyon and Logan to the Utah-Idaho State line near Franklin, Idaho.

✓ Route 92 From Route 15 (Interstate Route 15) near Point of the Mountain east via American Fork Canyon to Route 189 in Provo Canyon.

✓ Route 102 From Route 83 east of Lampo Junction northeasterly via Penrose and Thatcher to Route ~~82~~⁸⁴ (Interstate Route ~~80N~~⁸⁴) west of Tramonton.

✓ Route 106 From Route 89 northerly via Second West and Fourth North in Bountiful, thence northerly to Sheppard Lane in Farmington, thence east to Route 89.

✓ Route ~~126~~⁸² From Route 30 in Tremonton north via 300 East to Garland, thence east approximately 0.8 mile, thence north to Route 13.

✓ Route 134 From Kanesville on Route 37 northerly to Plain City, thence easterly to Pleasant View on Route 89.

✓ Route 163 From the Utah-Arizona State line southwest of Mexican Hat northerly via Blanding, Monticello and Moab to Route 70 (Interstate Route 70) at Crescent Junction.

✓ Route 169 From Route 162 east to Eden on Route 166.

✓ Route 189 From Route 15 (Interstate Route 15) south of Provo northerly via University Avenue and Provo Canyon to Route 40 south of Heber. Then commencing again from Route 40 at Hailstone Junction easterly to Francis, thence northerly via Kamas to Route 80 (Interstate Route 80) south of Wanship.

✓ Route 215 From a junction with Route 80 (Interstate Route 80) near the mouth of Parleys Canyon southeast of Salt Lake City, southwesterly near the south city limits of Murray, junctioning with Route 15 (Interstate Route 15), thence northwesterly, northerly and easterly to a junction with Route 15 (Interstate Route 15) north of Salt Lake City, (traversing the alignment of Interstate Route 215).

Route 666 From Route 163 at Monticello east to the Utah-Colorado State line.

State
Charters

RESOLUTION
Redesignation of Various State Routes
Page 7

The maps presented relating the action taken herewith are hereby a part of this resolution and will be stored at the office of the Planning Statistics Section of the Transportation Planning Division.

Dated this 20th day of May, 1977.

UTAH TRANSPORTATION COMMISSION

B. L. Loun

Chairman

Wayne A. Martin

Vice-Chairman

Alan E. Wood

Commissioner

Glen A. Shuck

Commissioner

Samuel H. Day

Commissioner

ATTEST:

Donald A. Fenley
Secretary

2

STATE ROUTES REQUIRING CHANGES IN ROUTE DESIGNATION SIGNING

<u>Existing Designation</u>	<u>New Designation</u>	<u>District</u>	<u>Miles</u>
SR-15	SR-9	5	32.6
SR-15	SR-9	3	12.3
SR-80	SR-92	6	26.8
SR-82	SR-126	1	3.1
SR-40	SR-134	1	12.4
SR-50 Part	SR-26	1	3.8
SR-89	SR-169	1	0.6
SR-84	SR-13	1	<u>27.8</u>
		Total	119.4

SR-70, SR-102, SR-69, SR-16 and SR-51 in District 1, remove rectangular route signs from sign posts.

US-89 signs thru Sevier Valley will be replaced with "Temporary I-70" signs with rectangular signs under the Temporary I-70 sign indicating the State Route designation until completion of I-70 thru this area. Upon completion of I-70 between Sevier Junction and Salina all State Routes will be resigned by their designated State Route, District 3

Present State Routes 15 and 80 will be dual route signed for a period of approximately two years as a guide to Tourists, Districts 5, 3 and 6

All directional signing (junction signs, etc.) affected by these revisions will also require changing.

Memorandum

UTAH STATE DEPARTMENT OF HIGHWAYS

DATE: June 2, 1977

TO : District Directors

FROM : L. R. Jester, P.E. *L.R.J.*
Engineer for Transportation Planning

SUBJECT: Redesignations of State Routes

On May 20, 1977, the Utah Transportation Commission approved the redesignations of various State Routes as described in the attached resolution. Please review the changes that have been approved in your District and notify all interested agencies within your area.

Attachment

Note: All Districts refer to last page of resolution for necessary signing changes.

UTAH STATE DEPARTMENT OF HIGHWAYS

June 2, 1977

C
O
P
Y

Mr. Norman V. Hancock, Chief
Game Management Section
Utah State Division of Wildlife Resources
1596 West North Temple
Salt Lake City, Utah 84104

Subject: Redesignation of State Routes

Dear Mr. Hancock:

On May 20, 1977, the Utah Transportation Commission approved the redesignations of the various State Routes as described in the enclosed Resolution.

Yours very truly,

L. R. Jester, P.E.
Engineer for Transportation Planning

LRJ/BDB/WDM/BDent/cs
Enclosure

cc: H.B. Leatham

Memo sent to all District Engineers & interested state personnel.

Also sent to: Mr. Marvin E. Blase, U.S. Dept. of Soil Conservation
Mr. Ralph Hodges, Utah Forest & Range Agency

State
Changyos
2

1/13/80

AMERICAN ASSOCIATION OF STATE HIGHWAY AND TRANSPORTATION OFFICIALS

ROBERT N. HUNTER, President
Chief Engineer
Missouri State Highway Department



HENRY E. STAMMILL, Executive Director
444 N. Capitol Street, N.W., Suite 225
Washington, D. C. 20001
Telephone (202) 624-5800

July 12, 1977

- Mr. Blaine J. Kay, Director
Utah Department of Transportation
- Mr. Darrell V. Manning, Director
Idaho Transportation Department
- Mr. Robert A. Burco, Director
Oregon Department of Transportation

[Handwritten signature and stamp]
NO. 100-1-100
U.S. DEPARTMENT OF TRANSPORTATION

Gentlemen:

The Route Numbering Committee reviewed the application coming from the Idaho Department of Transportation, and concurred in by the Utah Department of Transportation, for the redesignation of I-80N.

After reviewing the application, together with objections raised by States of Washington and Oregon, the Committee voted to redesignate I-80N as I-84, subject to concurrence by the Federal Highway Administrator, and with the State of Oregon in consultation with the States of Utah and Idaho to make the determination when the sign change would take place; but no later than July 1st, 1980.

This action was reviewed by the Executive Committee at its meeting on July 7th, 1977, and concurred therein.

Sincerely,

[Handwritten signature]
H. J. Rhodes
Deputy Director

HJR:pw

cc: Mr. William Cox
Federal Highway Administrator
Federal Highway Administration

RECEIVED
7-14-77

COPY OF LETTER RETAINED IN CENTRAL FILES RETURN THIS TO CENTRAL FILES AFTER ACTION HAS BEEN COMPLETED

SEARCHED INDEXED
SERIALIZED FILED
KAY

UTAH STATE DEPARTMENT OF HIGHWAYS

June 2, 1977

C
Mr. Norman V. Hancock, Chief
Game Management Section
Utah State Division of Wildlife Resources
1596 West North Temple
Salt Lake City, Utah 84104

O
Subject: Redesignation of State Routes

Dear Mr. Hancock:

P
On May 20, 1977, the Utah Transportation Commission approved the redesignations of the various State Routes as described in the enclosed Resolution.

Y
Yours very truly,

L. R. Jester, P.E.
Engineer for Transportation Planning

LRJ/BDB/WDM/BDent/cs
Enclosure

cc: H.B. Leatham

Memo sent to all District Engineers & interested state personnel.

Also sent to: Mr. Marvin W. Hines, U.S. Dept. of Soil Conservation
Mr. Ralph Jones, Utah Dept. of Agriculture

RESOLUTION

Transfer of State Constructed Roads

WHEREAS, under Utah State Transportation Code 72-3-102 (4) The department has jurisdiction and control over all state highways; and

WHEREAS, under Utah State Transportation Code 72-4-104 (2) When a state highway is realigned the former portion of it may be: (a) returned or relinquished to the county of municipality in which it is situated to be maintained as a highway; and

WHEREAS, with the completion of Highway 9 project F-014(17) sections of the existing highway State Route 9 project 81-C were either obliterated or incorporated into a frontage road. Said frontage road follow the old alignment of project FAP-81-C from sta.689+20 to 702+91. With the right and left right of way lines of project FAP-81-C terminating at the south right of way line of F-014(17). From thence said frontage road was designated as Ranch or 50 South.

WHEREAS, from its Easterly beginning point in the SE/4 NE/4 of Section 25, T41S, R12W, Sta. 689+20, into the SW/4 NE/4 of Section 25, T41S, R12W, SLM, Sta. 702+91, Project 81-C. Said frontage is within Virgin Town.

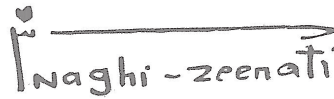
WHEREAS, the said frontage road will continue to serve as public roads, though not justified as part of the State System of Highways;

IT IS THEREFORE PROPOSED by Mr. Rick Torgerson, Region 4 Director, in concurrence with Region 4 Right-of-Way and Operations officials, that the frontage road known as Ranch or 50 South be transferred to the jurisdictions of the governing bodies of Virgin Town.

Virgin Town Class C roads will be increased by 0.26 miles.

Dated on this 18th day of September, 2020

UTAH TRANSPORTATION COMMISSION

 Naghi - zeenati

Naghi Zeenati, Commission Chair



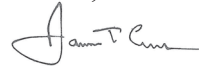
Wayne K. Barlow, Commissioner



Lew Cramer, Commissioner



Donna J. Law, Commissioner



Jim Evans, Commissioner



Natalie Gochnour, Commissioner



Kevin T. Van Tassell, Commissioner

Attest:
Secretary



Heather Barthold



May 29, 2020

Riley Lindsay
rlindsay@utah.gov

Dear Mr. Lindsay

The Town of Virgin wishes to request a jurisdictional transfer for 50 S. ROW in Virgin. This stretch of road begins at approximately 1811 E. SR9 and goes to approximately 2250 E. SR9. We are looking for any assistance you can give us.

Please contact the town office at 435-635-4695 for any questions or concerns you may have. Due to COVID-19 the office is closed but our messages are checked on a regular basis so please leave a message.

Thank you,
Monica Bowcutt
Town Clerk

SR-9 Virgin Town Jurisdictional Transfer



UDOT Region 4 ROW Department Date: 9/1/2020

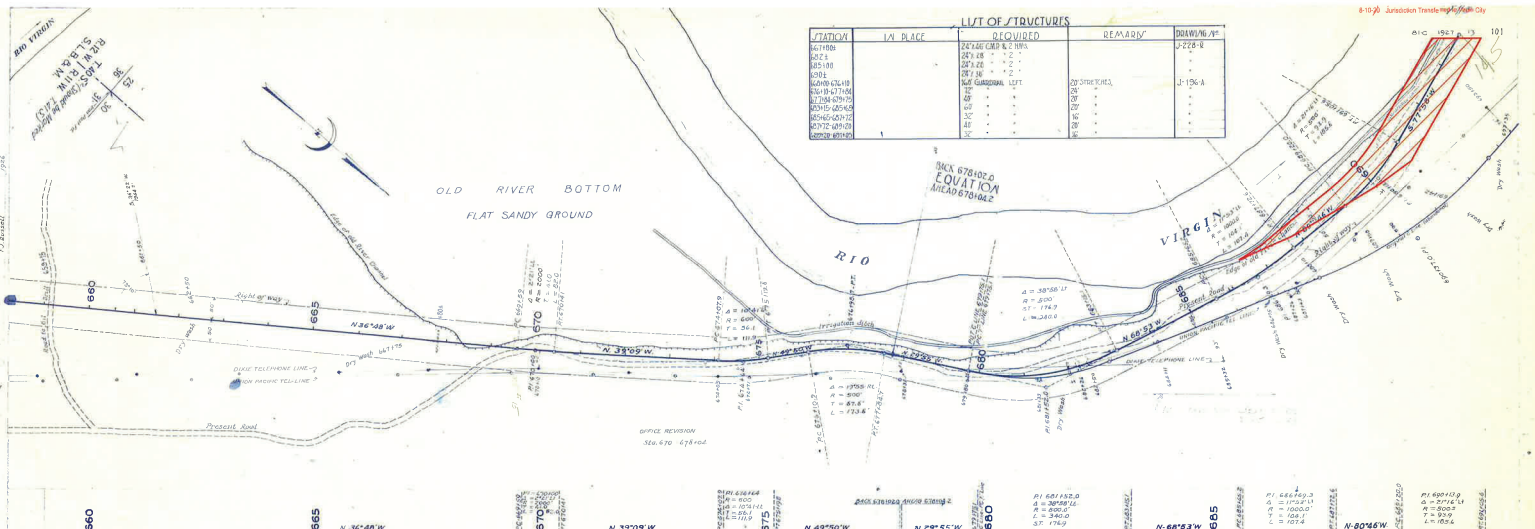


Legend

- Jurisdictional Transfer Area
- Tenth Mile Reference



LTDOT



STATION	IN PLACE	REQUIRED	REMARKS	DRAWING
667.00		247.48	247.48	2-228-R
667.11		247.48	247.48	2-228-R
667.18		247.48	247.48	2-228-R
667.25		247.48	247.48	2-228-R
667.32		247.48	247.48	2-228-R
667.39		247.48	247.48	2-228-R
667.46		247.48	247.48	2-228-R
667.53		247.48	247.48	2-228-R
667.60		247.48	247.48	2-228-R
667.67		247.48	247.48	2-228-R
667.74		247.48	247.48	2-228-R
667.81		247.48	247.48	2-228-R
667.88		247.48	247.48	2-228-R
667.95		247.48	247.48	2-228-R
668.02		247.48	247.48	2-228-R
668.09		247.48	247.48	2-228-R
668.16		247.48	247.48	2-228-R
668.23		247.48	247.48	2-228-R
668.30		247.48	247.48	2-228-R
668.37		247.48	247.48	2-228-R
668.44		247.48	247.48	2-228-R
668.51		247.48	247.48	2-228-R
668.58		247.48	247.48	2-228-R
668.65		247.48	247.48	2-228-R
668.72		247.48	247.48	2-228-R
668.79		247.48	247.48	2-228-R
668.86		247.48	247.48	2-228-R
668.93		247.48	247.48	2-228-R
669.00		247.48	247.48	2-228-R

